

Community Physician Health and Safety (CPHS) Program

Physician Business Services Webinar



Safety, Wellbeing, Innovation, Training & Collaboration in Healthcare

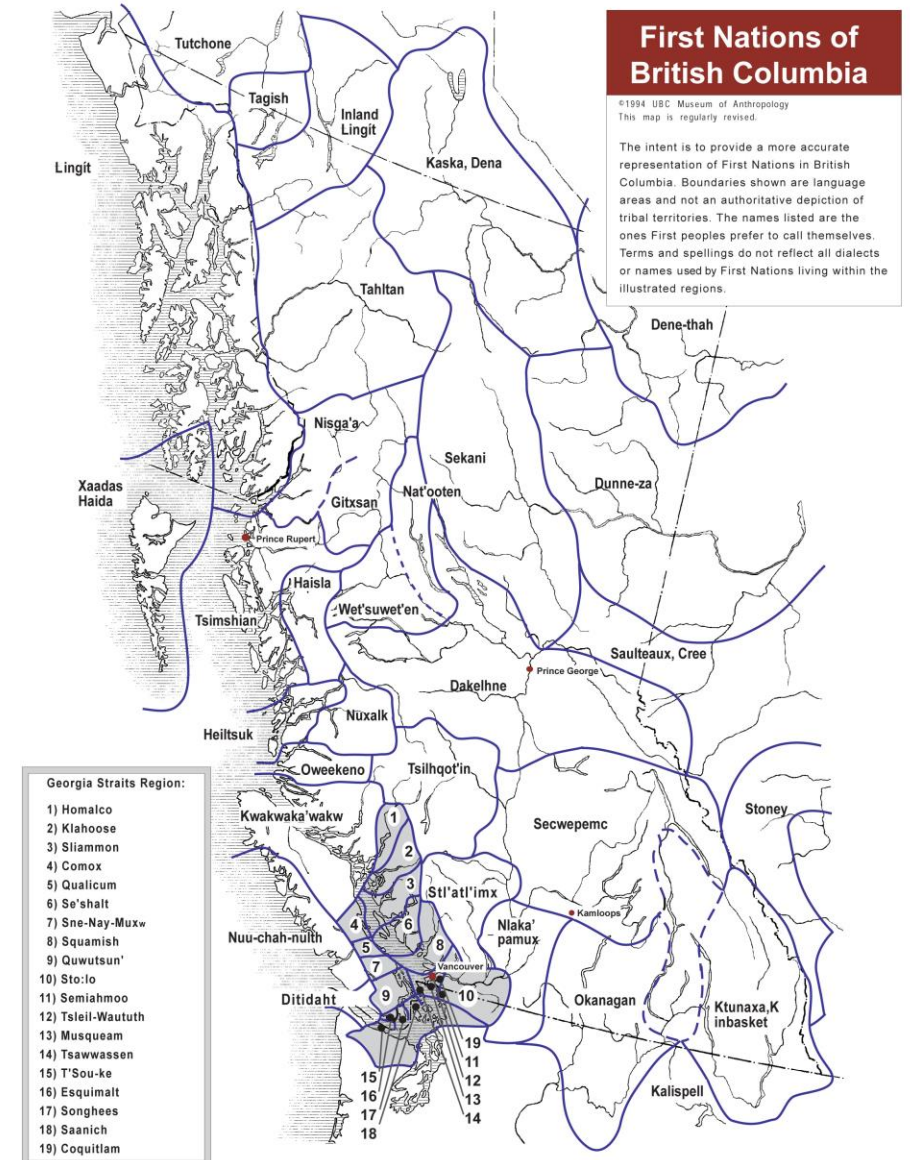
February 26, 2025 5:30pm

Territorial Acknowledgement

SWITCH BC humbly and respectfully acknowledges the unceded lands of approximately 200 distinct First Nations in British Columbia.

We further acknowledge the profound harms of colonization on First Nations, Métis, and Inuit peoples as well as the ongoing, intergenerational trauma people are living with today.

In our work and in our lives, we are committed to listening and learning, to truth and reconciliation, and to finding better ways of being on this land.



About Us

Community Physician Health & Safety

Clinic Health & Safety Assessments

Findings and Web Portal

How to Connect

Questions

Who we are:

Independent, not for profit organization focused on healthcare specific workplace health and safety.

Unique governance model.

Our Board of Directors is made up of representatives from health unions, health employers, physicians, WorkSafeBC, and the Ministry of Health.

The Board makes consensus decisions to support the health, safety, and wellbeing of everyone working in healthcare in B.C.



Why we are needed:

Because people working in healthcare are twice as likely to be injured at work compared to the provincial average.

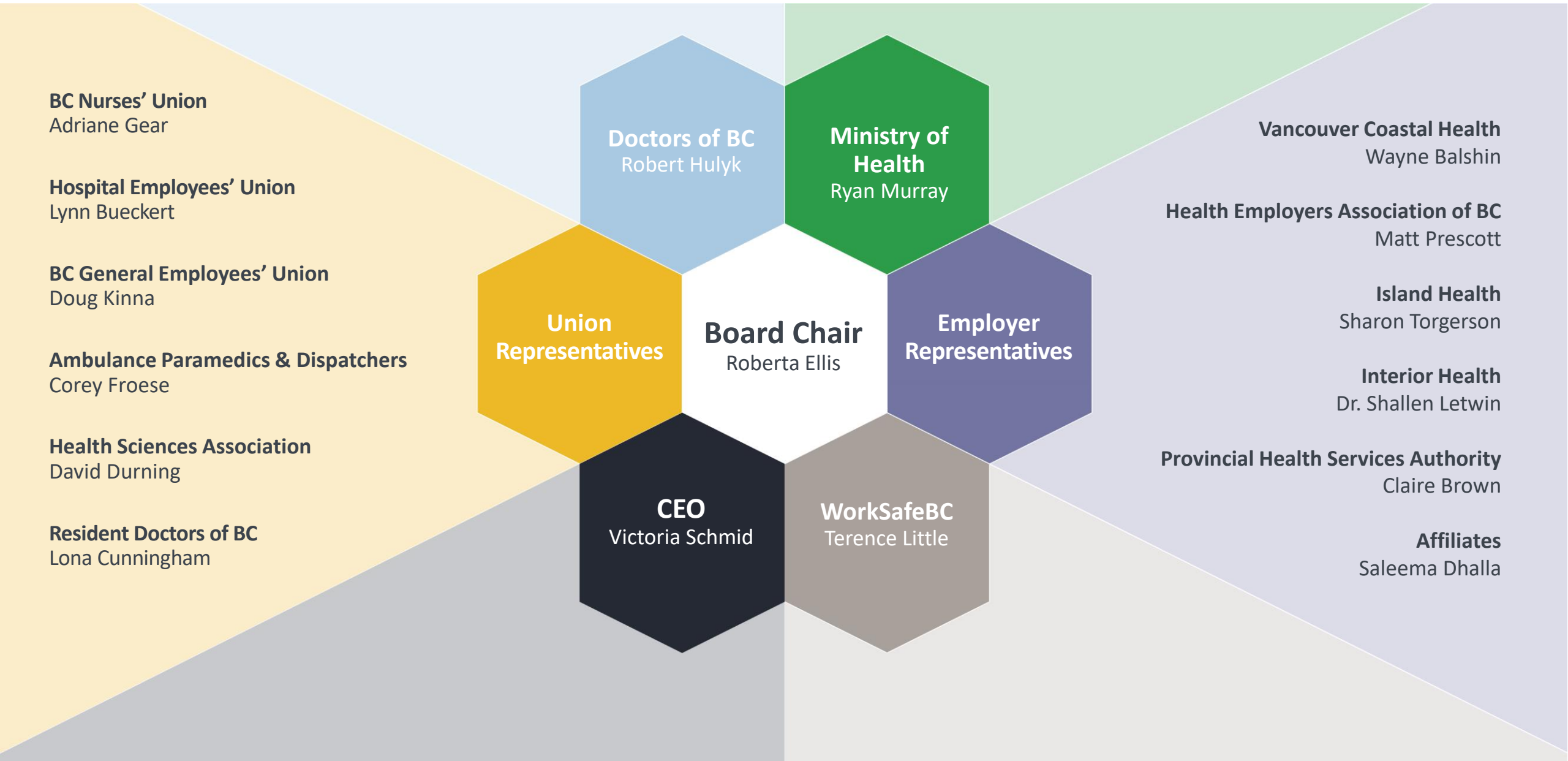
Because mental health injury rates are climbing higher in healthcare than any other sector. *40% of all mental health claims in 2019-2021.

Because workplace violence rates are higher in healthcare than any other sector. *64% of all violent incident claims in 2021.

Because we need provincewide, consistent, high-quality solutions, programs, and initiatives.

* Statistics WorkSafeBC and category is healthcare and social services

Board of Directors



Programs

Provincial Violence
Prevention Curriculum
Training Refresh

Psychological
Health & Safety
Management System

Occupational
Health & Safety
Resource Centre

Community Physician
Health & Safety
Program

Community Physician Health and Safety Program



What's Improving

Now

Physicians are required to search through multiple sources and interpret legislation and requirements unique to their practice.



New

Community physician-specific resources and tools providing one source of truth in an easily digestible way.

Now

Lack of awareness, difficult to navigate health and safety responsibilities for community physicians in their various roles throughout the sector.



New

Responsibilities defined for community physicians when it comes to health and safety in an employer role versus supervisor role.

Now

No system-wide program which supports community physicians in improving workplace health and safety.



New

A provincial health and safety program informed by and for community physicians and their support staff.

Clinic Assessments

Occupational Health and Safety Clinic Assessment



To Provide Information and Support

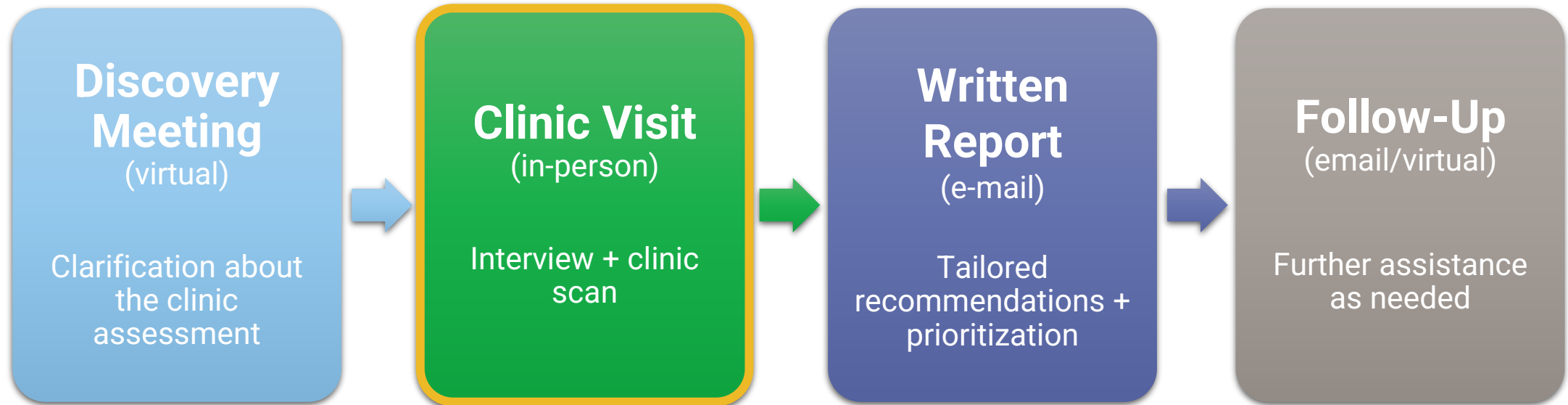


Workplace Safety for all Staff



Free, Voluntary, and Confidential

Clinic Assessment Workflow



Clinic Assessment Scope

Interview

To assess clinic operations and procedures



Clinic Scan

To assess safety measures in place

Health and Safety Topics

- H&S Program Policy
- H&S Meetings
- Worker Representative/JOHSC
- New Worker Orientation
- Workplace Regular Inspection
- Chemical & Biological Hazards
- Violence Prevention
- Ergonomics
- Bullying and Harassment
- First Aid
- Incident Reporting and Investigation
- Working Alone
- Emergency Preparedness

Clinic Assessment Details

- ≤ 2 hours in duration
- During regular working hours
- Minimal disruptions to clinic operations



Clinic Assessment Advantages



Personal guidance



Assess clinic's environment and layout



Tailored recommendations for enhanced safety



Ranking of implementation priorities

Findings and Web Portal

Clinic Assessment Summary Data

10/04/24

**Assessment
Start Date**

25

**Clinics
Assessed**

5

**Upcoming
Assessments**

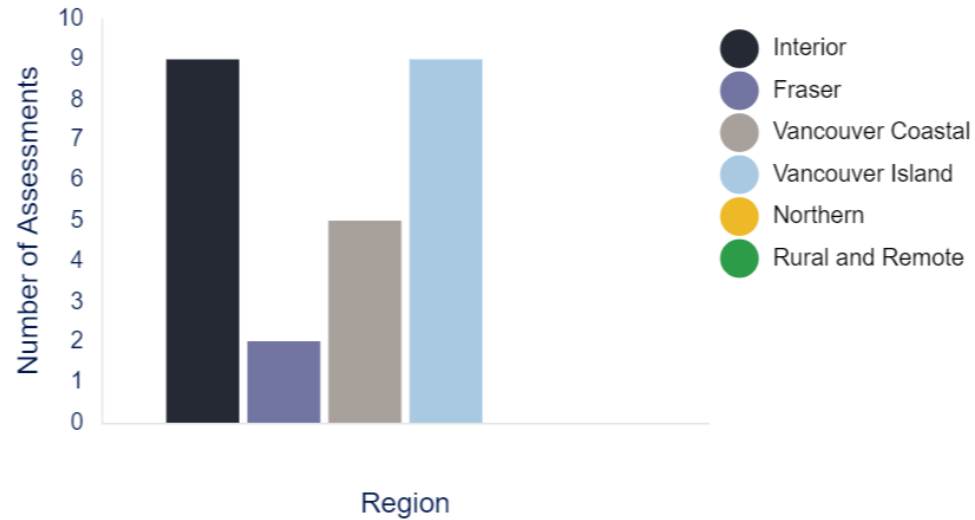
198

**Physicians
Participated**

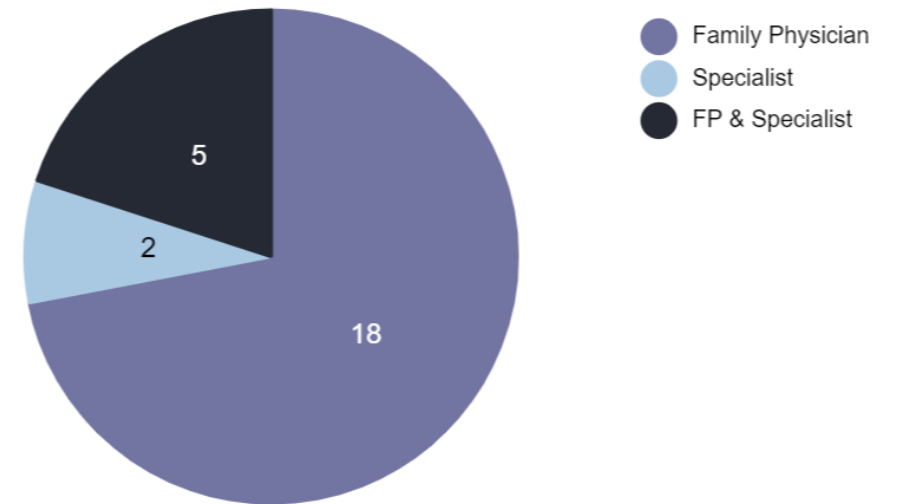
266

**Staff
Participated**

Clinic Assessments by Region



Physician Type of Clinics Assessed



As of 14/02/2025

Satisfaction with Clinic Assessments

95.40%

Average Health & Safety Proficiency Prior to Assessment

6.69/10

Average Health & Safety Proficiency Post Assessment

7.85/10

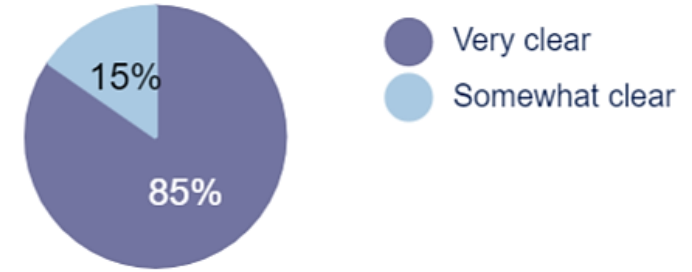
Likelihood of Continuing with Corrective Actions Over Time

93.30%

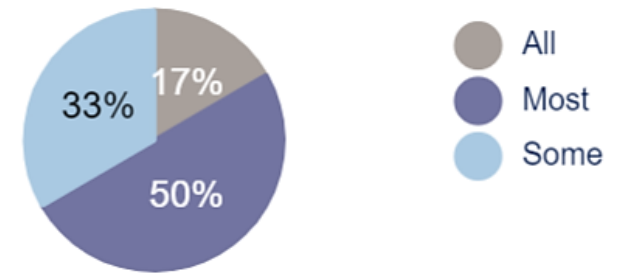
Average Feeling of Support by SWITCH BC After 3 Months

9.17/10

Were Recommendations Clear/Easy to Follow?



Recommendations Implemented 3 Months Post Visit



As of 14/02/2025

Web Portal

- One site to understand regulatory health and safety requirements, manage risk, and maintain compliance.
- Interactive and customized based on clinic's demographics.
- Templates, checklists, posters, procedures, and policies to reduce administrative burden.
- Progress tracking.

www.cphs.switchbc.ca

Community Physician Health and Safety Program

This is your single source of truth for all the community physician-specific resources and tools you'll need to build your health and safety program.

[START BUILDING YOUR PROGRAM](#)

SWITCH BC | doctors of bc | BC Columbia | Ministry of Health

Create your account and start building your program today

By taking just a few minutes to create an account, you'll be able to invite collaborators from your clinic and save your progress as you work your way through the program.

[CREATE ACCOUNT](#)

- Simple signup process
- No stored/shared clinic information
- Save progress with interactive checklists
- Add team members to collaborate on tasks
- Access urgent help from safety professionals
- Pre-filled, print-ready policy templates

Who's it for

This provincial program, with an interactive and easily digestible format, has been developed for use by all community physicians and support staff in British Columbia.

The program has been designed to support and enhance workplace health and safety and ensure you can easily meet requirements, reduce your risks, and ultimately make your clinic safer for staff and patients. It can be used in all work settings, such as, but not limited to:

- Physicians in community practice settings**
 - Private offices
 - Medical clinics
 - After hours and walk-in clinics
- Private, non-health authority, accredited diagnostic and treatment facilities**
 - Non-hospital surgical facility
 - Diagnostic imaging
 - Medical laboratories
 - Pulmonary function laboratories
 - Clinical neurophysiology
 - Cardiac exercise stress testing
- Physicians as workers and as supervisors in other work settings**
 - Primary Care Locations (PCLOs)
 - Clinics
 - Medical/surgical facilities

*Where allied health providers who are employed by the health authority are working in community physicians' offices.

CONNECT WITH US



Email

cphs@switchbc.ca



QR Code



Portal

- Feedback
- Contact Us
- Connect with Us

back to main site

SWITCH BC
Safety, Wellbeing, Innovation, Training & Collaboration in Healthcare

My Account Logout

About Partnerships Build Your Program Clinic Assessments

Connect with us

Has your number of staff or clinic location recently changed? [Update your profile.](#)

Hello CPHS

Welcome to your one-stop resource for building your comprehensive health and safety program.
Save your progress as you make your way through the requirements for each topic.
You can add team collaborators from your clinic from your [account page](#).

In British Columbia, workers are protected by the Workers Compensation Act (WCA) and the Occupational Health and Safety (OHS) Regulation, which also outline employers' legal obligations. Community physicians who are employers are legally responsible for ensuring the health and safety of all workers at their worksite.

CONTACT US PARTNERSHIPS CLINIC ASSESSMENTS

FEEDBACK

Connect with a safety professional

SWITCH BC representatives are available to provide urgent and discreet help to your clinic for any matters related to your clinic's health and safety.

Please note that our team operates within 8:30am-4:30pm business hours, Monday through Friday.

Help Request

Name *

First Last

Job Title:

Region *
Select

Email Address * Phone Number

Level of Urgency *
 Within 5 business days
 Within 7 business days
 Not time-sensitive

Preferred Contact Method *
 Email
 Phone

Message *

SUBMIT

Get in touch

If you have questions about the Community Physicians Health and Safety Program, or are experiencing technical issues, contact with our team Monday through Friday 8:30-4:30pm.

SWITCH BC's online and safety services are available to private clinics and licensed help to your clinic for any matters related to your clinic's health and safety. Contact with an address for insights into how we can help to support the success of your organization. Contact with the address.

What is your request related to? *
Health and safety services

Name *
First Last

Job Title *

Region *
Interior

Email *

Phone Number
+1 (306) 234-3678

Would you like us to follow-up with you? *
Yes

Message *

SUBMIT

Feedback

We appreciate your feedback so that we can provide the best experience possible. Please note that our team operates within 8:30am-4:30pm business hours, Monday through Friday.

What is your feedback related to? *
General program feedback

Job Title: *

Region *
Interior

Would you like us to follow-up with you? *
No

Tell us about your experience *

SUBMIT

Web Portal: Connect with Us, Feedback, Contact Us

Your
practice



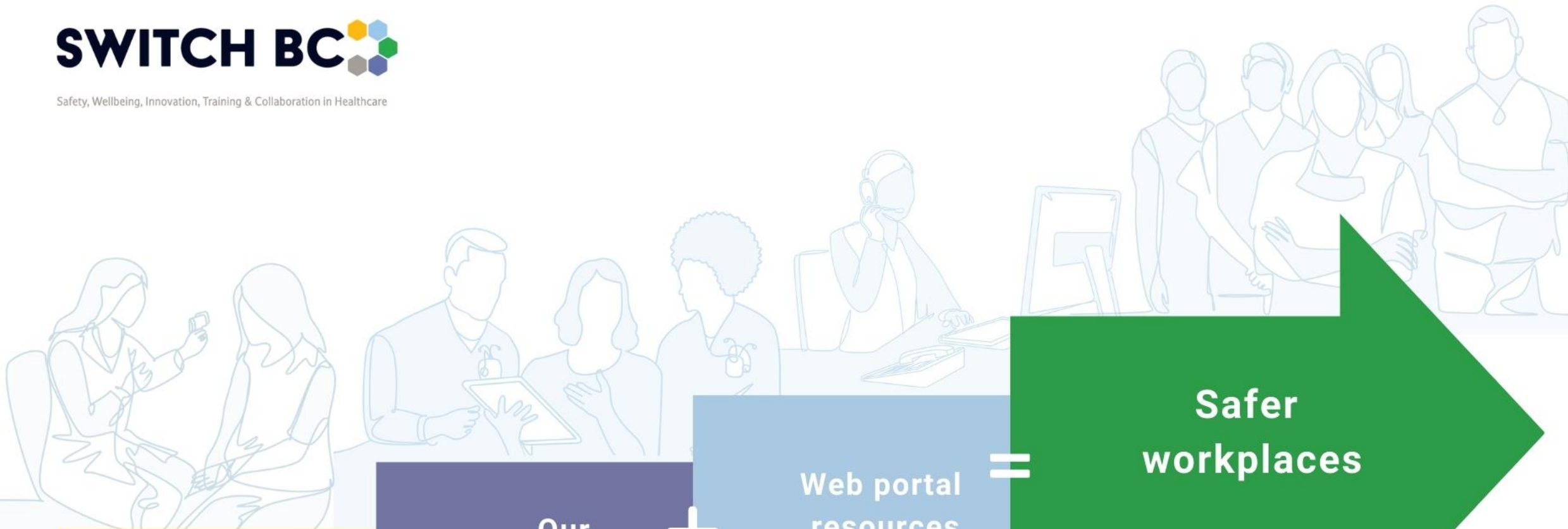
Our
safety
professionals



Web portal
resources



Safer
workplaces



Questions?



Thank you!

Our email: CPHS@switchbc.ca